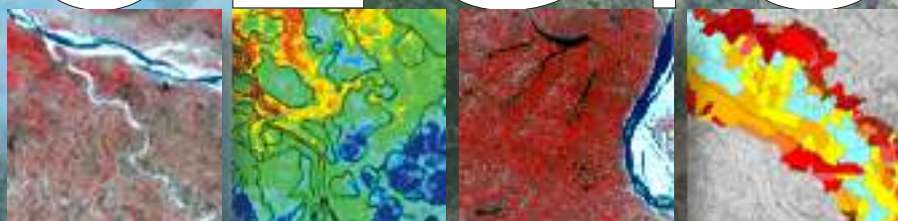


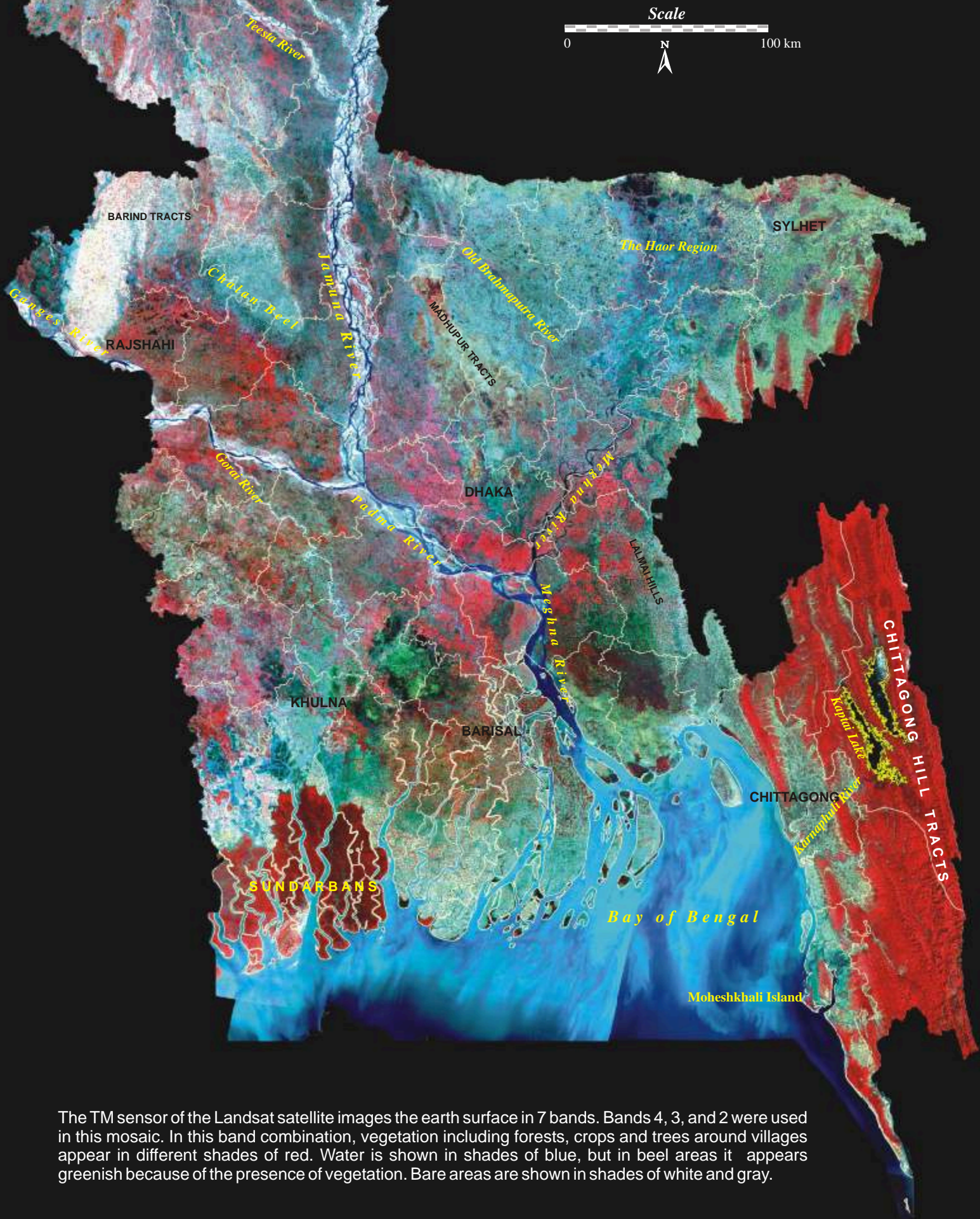


CEGIS

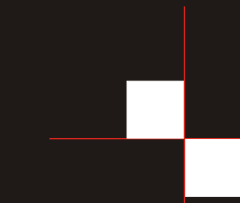


CENTER FOR ENVIRONMENTAL AND
GEOGRAPHIC INFORMATION SERVICES

LANDSAT TM IMAGE MOSAIC OF BANGLADESH, 1997



The TM sensor of the Landsat satellite images the earth surface in 7 bands. Bands 4, 3, and 2 were used in this mosaic. In this band combination, vegetation including forests, crops and trees around villages appear in different shades of red. Water is shown in shades of blue, but in beel areas it appears greenish because of the presence of vegetation. Bare areas are shown in shades of white and gray.



The Center for Environmental and Geographic Information Services (CEGIS) is an independent organization for Integrated Environmental Analysis using Geographic Information System (GIS), Remote Sensing, Information Technology and Databases. It is a think tank that provides solutions to stakeholders facing challenges in sectors such as, water resources, agriculture, fisheries, engineering, transportation and environment, and recommends technical options based on local realities that are feasible from the socio-economic and institutional points of view.

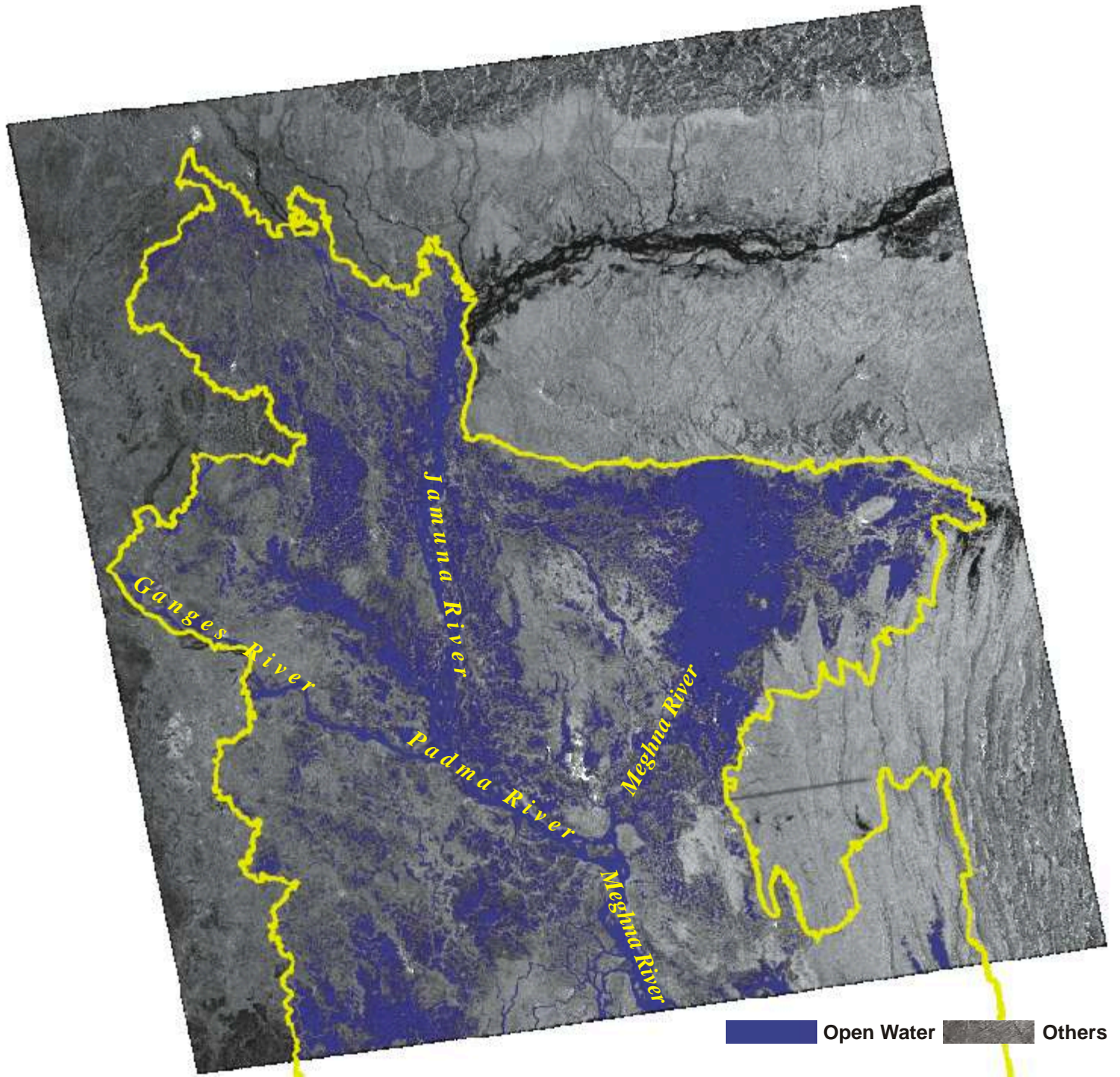
The services and products of CEGIS relate to advice and consulting, research and development, spatial analysis, information and database, and training. The organization has been set up under the aegis of the Ministry of Water Resources supported by the Government of Netherlands. The clients of CEGIS are the Water Resources Planning Organization (WARPO), the Bangladesh Water Development Board (BWDB), other agencies of the Government of Bangladesh, and private sector organizations.

The most notable of CEGIS' strengths is its multidisciplinary group of highly qualified scientists and technical professionals who are skilled in conducting integrated studies of water related problems. Its systematic approach to work, good ties with institutions within and outside the country and easy access to expertise from other countries, all contribute to the success of the organization.

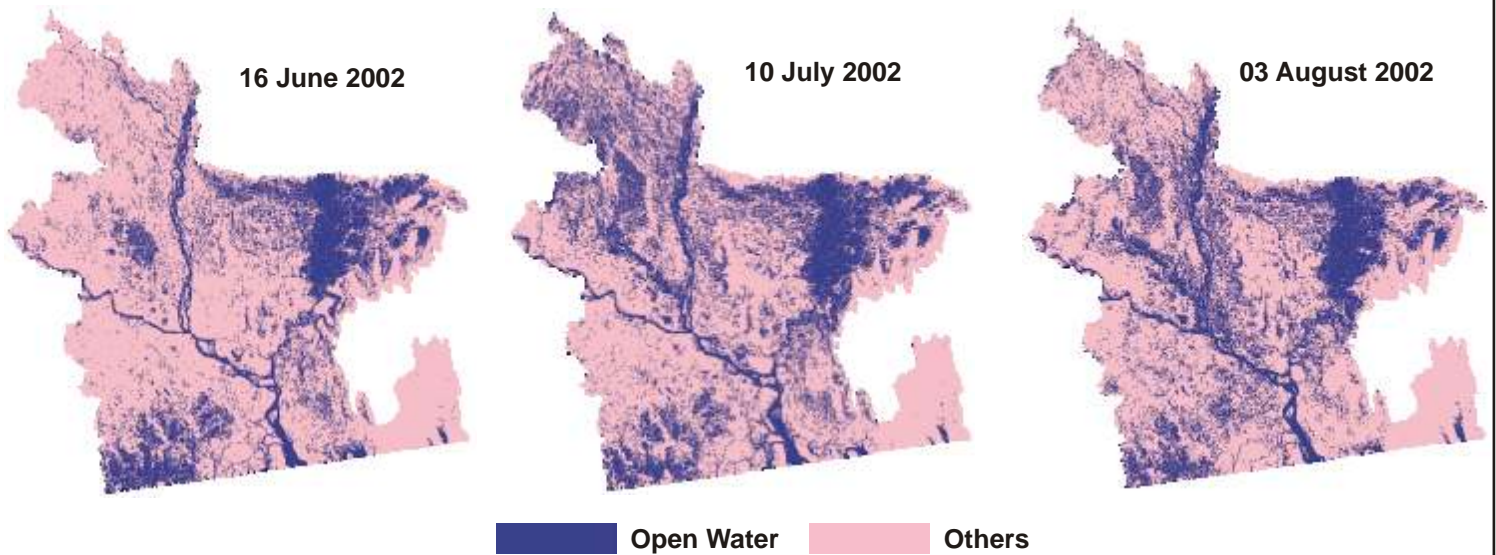
CEGIS is structured around its disciplines and services that include Environmental Analysis for integrated environmental studies; Spatial Analysis for interpreting and processing satellite images and GIS; Database and Information Technology for expertise in spatial databases, administration, programming of databases and Web systems; and Training on various courses. The services of the organization are supported by an administration and a finance section along with a well equipped and professional computer system unit. CEGIS has a well stocked library that contains reference materials and project documents related to environment, water resources, forestry, rural and economic development, GIS etc. and pursues communication and outreach activities.

Flood Monitoring 2002

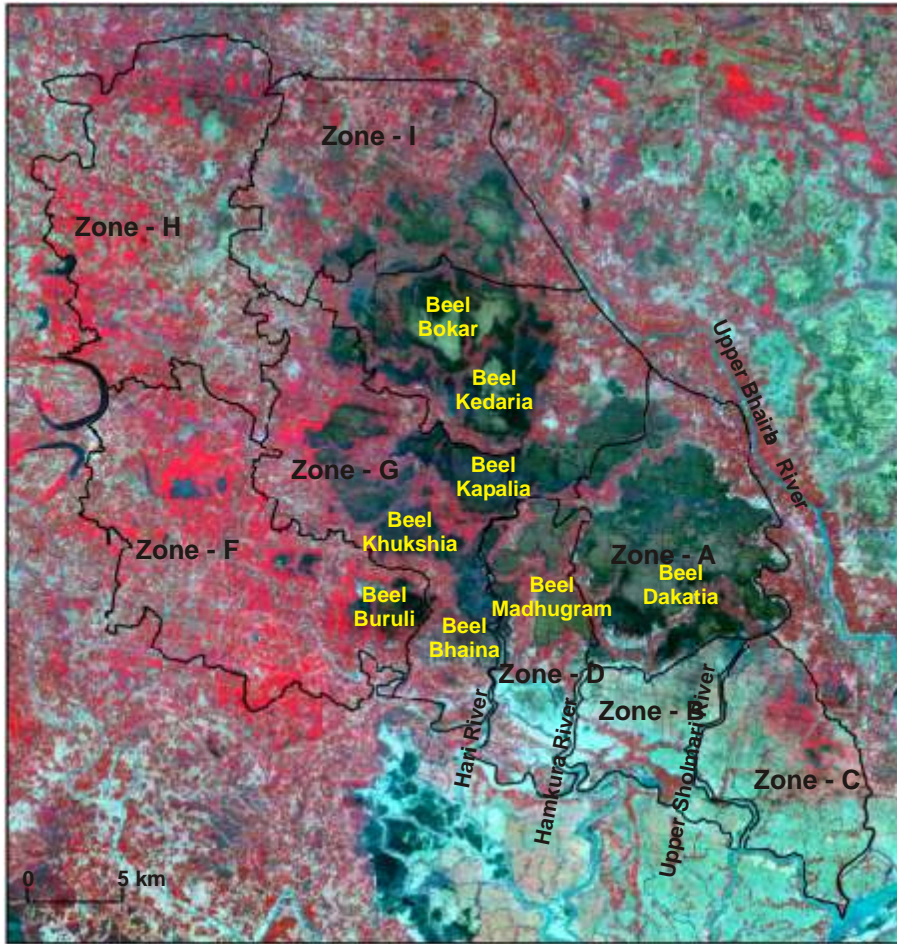
Open water extent map derived from RADARSAT ScanSAR Wide Beam Image, 03 August 2002



Time series of classified radar images showing changes in open water extent through 2002 monsoon.



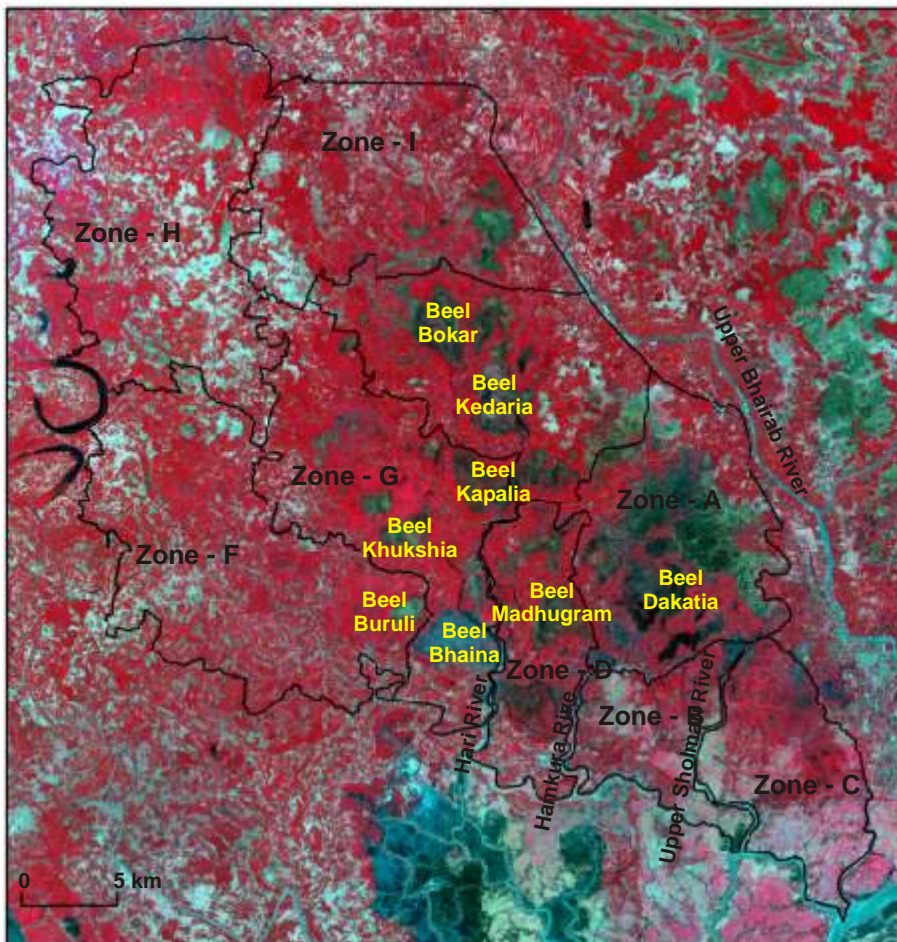
Khulna-Jessore Drainage Rehabilitation Project (KJDRP)



Landsat TM image March 1997

The Khulna-Jessore Drainage Rehabilitation Project (KJDRP) was taken up for removing drainage congestion on a sustainable basis in parts of Khulna and Jessore Districts in Southwest region of Bangladesh. Environmental and social impact assessment of KJDRP, carried out by CEGIS, recommended Tidal River Management (TRM) that would maintain the drainage system. Environmental, socio-economic and institutional monitoring of KJDRP by CEGIS reveal that active participation of the stakeholders through Water Management Associations (WMA) has been key to the application of the TRM concept in removing drainage congestion from more than 90% of the project area, thereby bringing down poverty level from 75% during 1993 to 53% during 2002.

Change in landuse/landcover in the study area is monitored with the help of satellite images.



IRS 1D LISS III image April 2001

Class Name	Area	
	March 1997 (%)	April 2001 (%)
Water (includes rivers, water-bodies, beels with and without aquatic weeds)	26	16
Agricultural crops	32	45
Fallow land	15	12
Settlements	27	27
Total:	100	100

- Green vegetation cover
- Water
- Moist soils
- Fallow lands
- Water Management Association (WMA) zone boundary

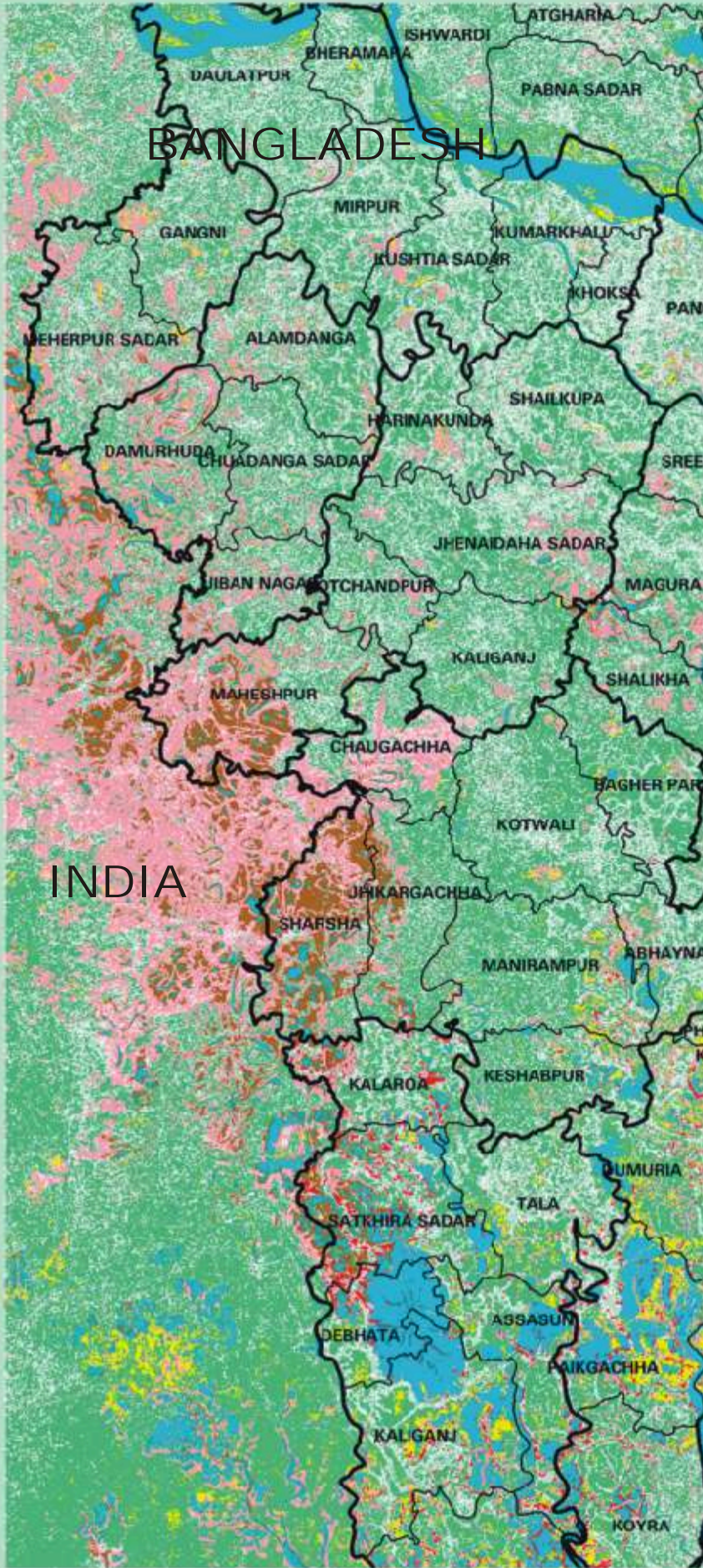
Satellite based radar image for mapping and monitoring floods of 1998

Open water extent derived from RADARSAT ScanSAR
Wide Beam Image, 10 September 1998

- OPEN WATER
- OTHERS
- AREA OUTSIDE IMAGE



Flood damage assessment in the South-West Region of Bangladesh for the year 2000



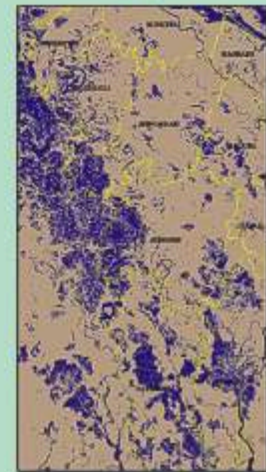
- | | | | |
|---|--|---|---|
|  | Flooded Settlements (all affected settlements could not be detected) |  | Apparently Undamaged Aman |
|  | Water, Rivers, Beels, Shrimp Ghers on Oct. 14 but not on Oct. 26 |  | Aman under floodwaters from Sep. 30 to Oct. 14 but not on Oct. 26 (some may survive with low yield) |
|  | Water, Rivers, Beels, Shrimp Ghers on Oct. 26 |  | Aman under floodwaters from Sep. 30 to Oct. 26 (severely damaged) |



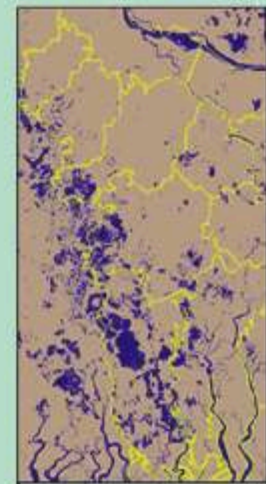
RadarSat image of 13 August 2000 showing open water in blue.



RadarSat image of 06 September 2000 showing open water in blue.



RadarSat image of 30 September 2000 showing open water in blue.



RadarSat image of 26 October 2000 showing open water in blue.



Satellite images of the Jamuna River 1973 - 2002

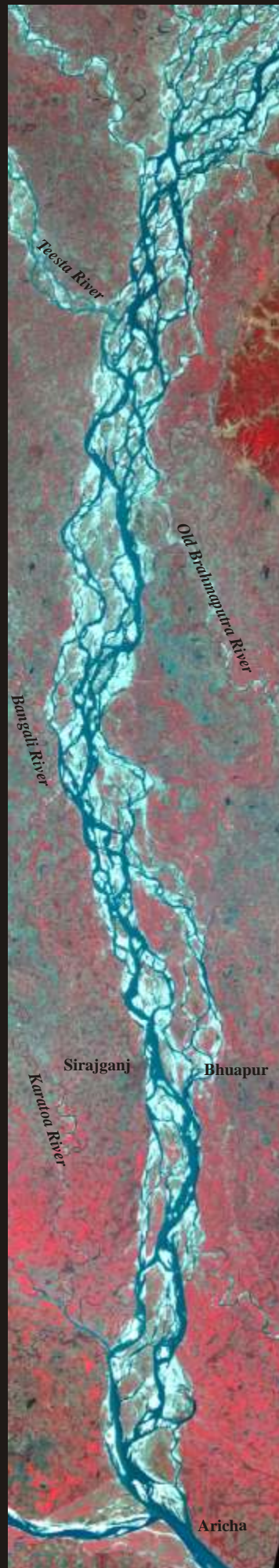
Digital image processing and GIS techniques help quantify and map morphological changes from the time series of images.



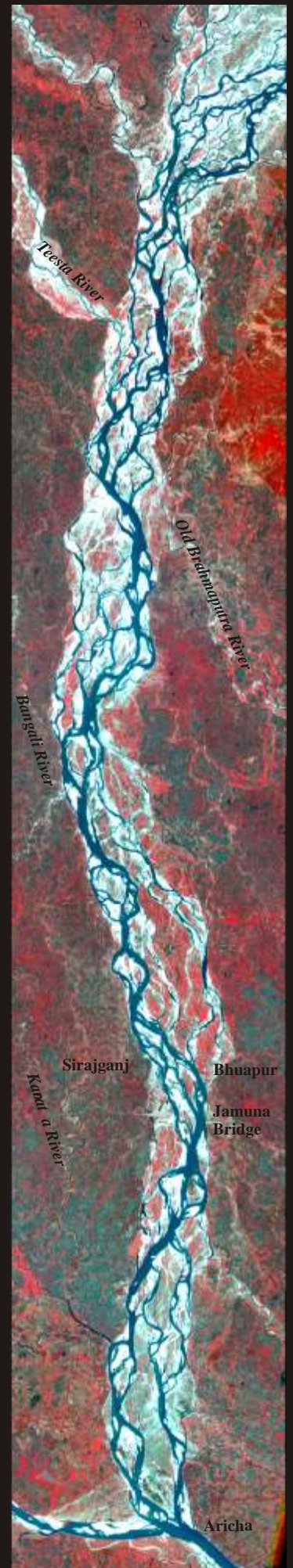
1973



1983



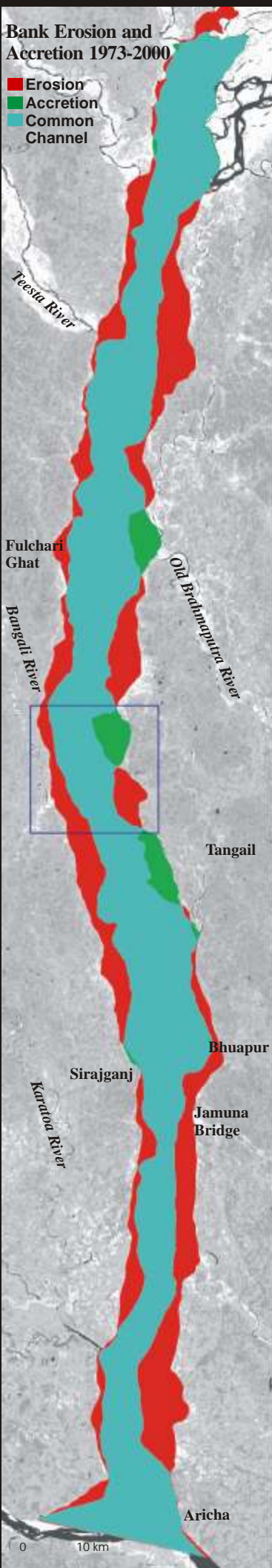
1994



2002

Bank Erosion and Accretion 1973-2000

- Erosion
- Accretion
- Common Channel

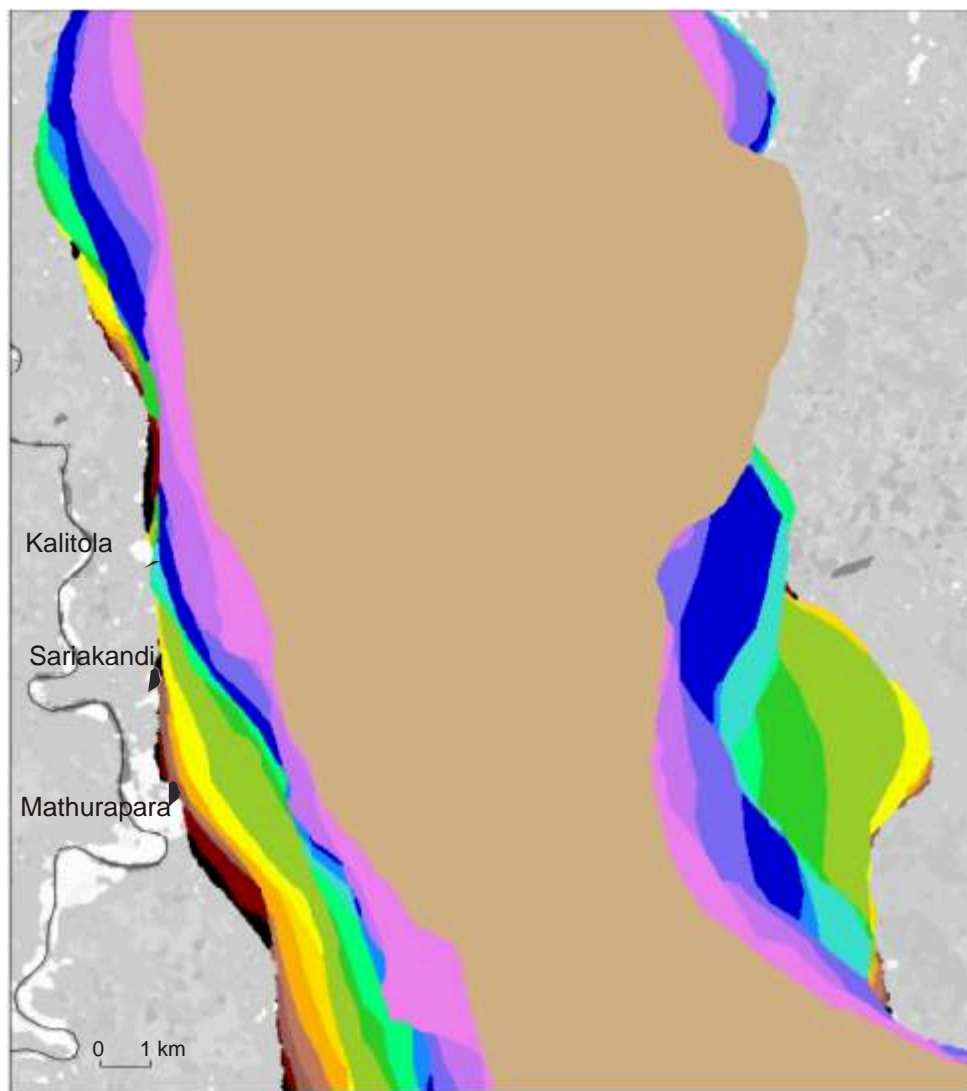


Jamuna River Bank Erosion

The highly dynamic nature of the Jamuna River causes annual erosion of tens of square kilometers of floodplain along both its banks. Over the last thirty years, this river eroded nearly 820 km² while accretion was only 120 km². During this period, the erosion has made about 0.7 million people landless and homeless. Many agencies are working on protecting the banks of the river including the BWDB and FAP projects. CEGIS provides support to most of these agencies by carrying out morphological analysis and predictions based on remote sensing and other hydro-morphological data. This analysis helps to plan, design, and maintain bank protection structures.

Cumulative floodplain loss due to bank erosion 1973-2000

- 73 within banks
- 73-76
- 76-78
- 78-80
- 80-83
- 83-84
- 84-85
- 85-87
- 87-89
- 89-92
- 92-94
- 94-95
- 95-96
- 96-97
- 97-98
- 98-99
- 99-2000



River Bank Protection Structure

Ecological classification of a coastal area using satellite image of 2001



Hills & Foothills



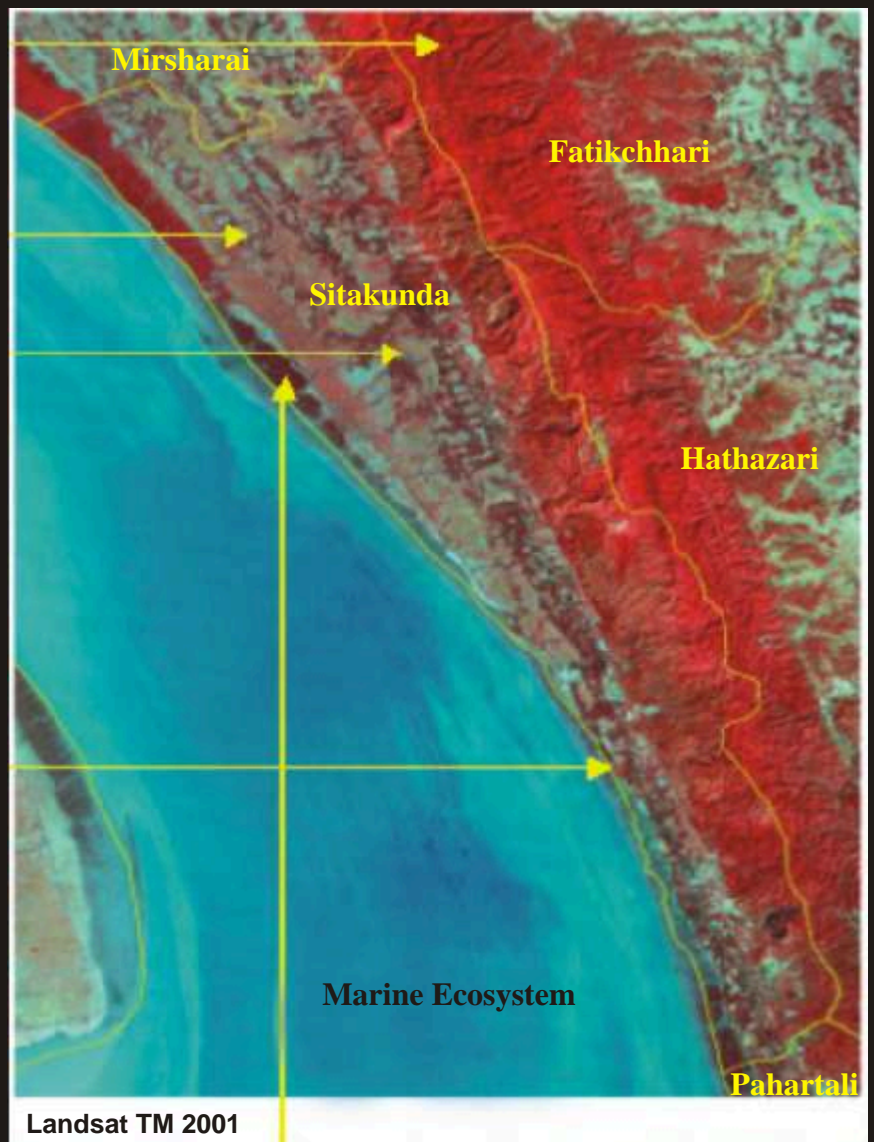
Agricultural lands



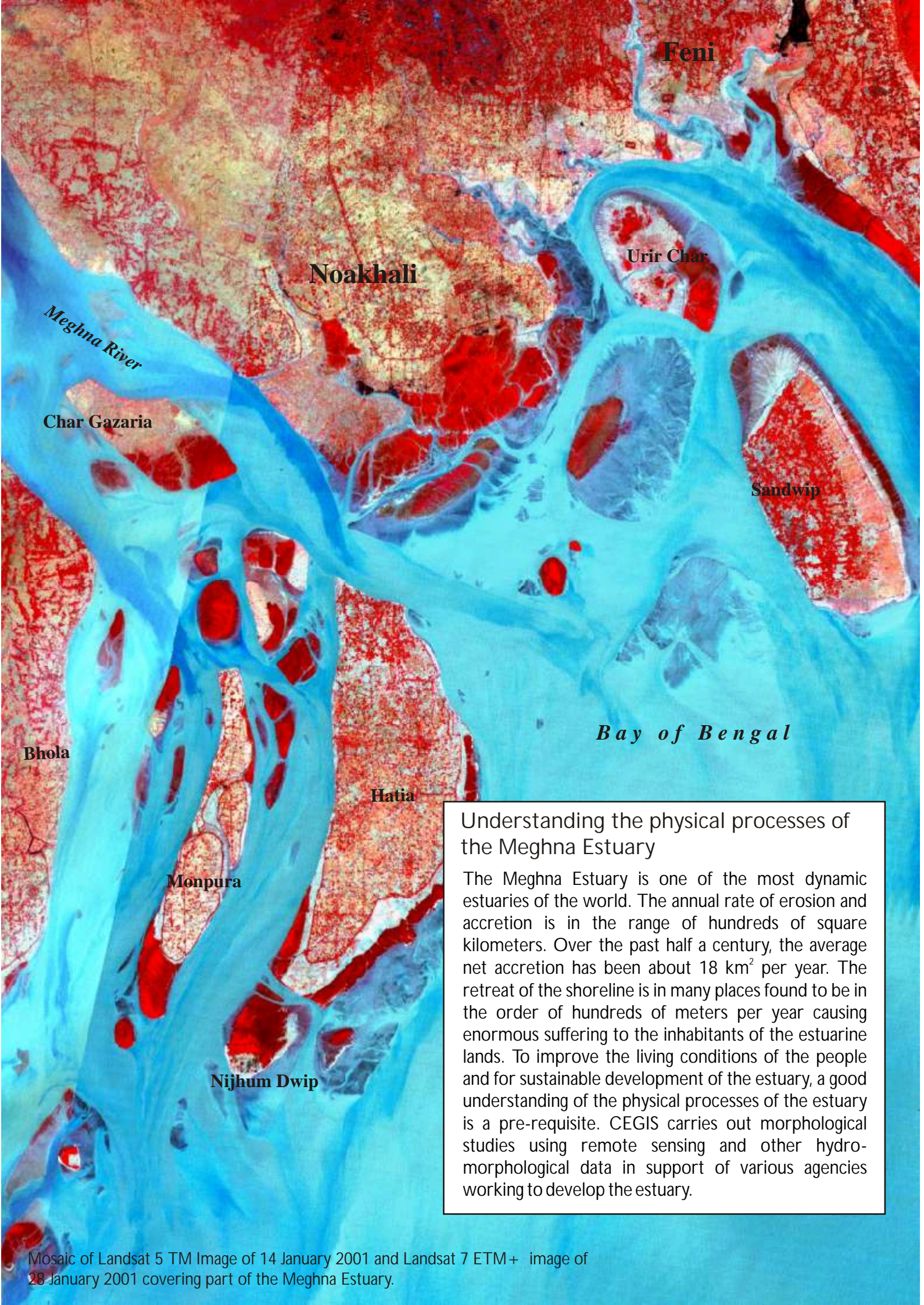
Village groves



Dike vegetation



Mangroves



Feni

Noakhali

Urir Char

Meghna River

Char Gazaria

Sandwip

Bay of Bengal

Bhola

Hatia

Monpura

Nijhum Dwip

Understanding the physical processes of the Meghna Estuary

The Meghna Estuary is one of the most dynamic estuaries of the world. The annual rate of erosion and accretion is in the range of hundreds of square kilometers. Over the past half a century, the average net accretion has been about 18 km² per year. The retreat of the shoreline is in many places found to be in the order of hundreds of meters per year causing enormous suffering to the inhabitants of the estuarine lands. To improve the living conditions of the people and for sustainable development of the estuary, a good understanding of the physical processes of the estuary is a pre-requisite. CEGIS carries out morphological studies using remote sensing and other hydro-morphological data in support of various agencies working to develop the estuary.



CEGIS

Center for Environmental and Geographic
Information Services

House 49, Road 27, Banani, Dhaka-1213, Bangladesh

Phone: 8817648-52, 8821570-2

Fax: (880-2)8823128, Email: egis@cegisbd.com

Web: www.cegisbd.com

COVER PHOTO:

*Example of Terra MODIS RGB imagery product
acquired on 19 March 2002.*

Source: NASA website.